



HYDROTAP G5 BCS ELITE PLUS BRUSHED CHROME



BOILING



CHILLED



SPARKLING

FILTERED

Order Code H5E783Z01AU

Zip HydroTap Design Range Boiling, Chilled, Sparkling, Filtered water system features a single under bench command centre including full colour interactive touch screen display with pin code protection and customisable settings including boiling water safety mode, 2 energy saving modes including ON/OFF timers and 2 hour sleep mode, 'Quiet' mode with automated intelligent fan speed adjustment, SteriTouch® antimicrobial protection impregnated into key water paths for enhanced hygiene, 100% water efficient air cooled technology, 0.2 micron water filtration, and 2 disposable CO2 cylinders.



Manufacturing Code H5E783Z01AU

Capacity Residential

Tap Zip HydroTap Design Range ELITE PLUS Tap (Brushed Chrome)

Water Pressure Min 250kPa - Max 700kPa

Water Connection 1/2" BSP (G1/2)

Water Supply Requirements Cold

Water Valves Integrated 500kPa Pressure limiting valve and Dual Check Valve

Power Rating 1.53kW 220-240V 50Hz

Power Supply 1 x 10 Amp socket outlet

Dimensions W339mm x D460mm x H333mm

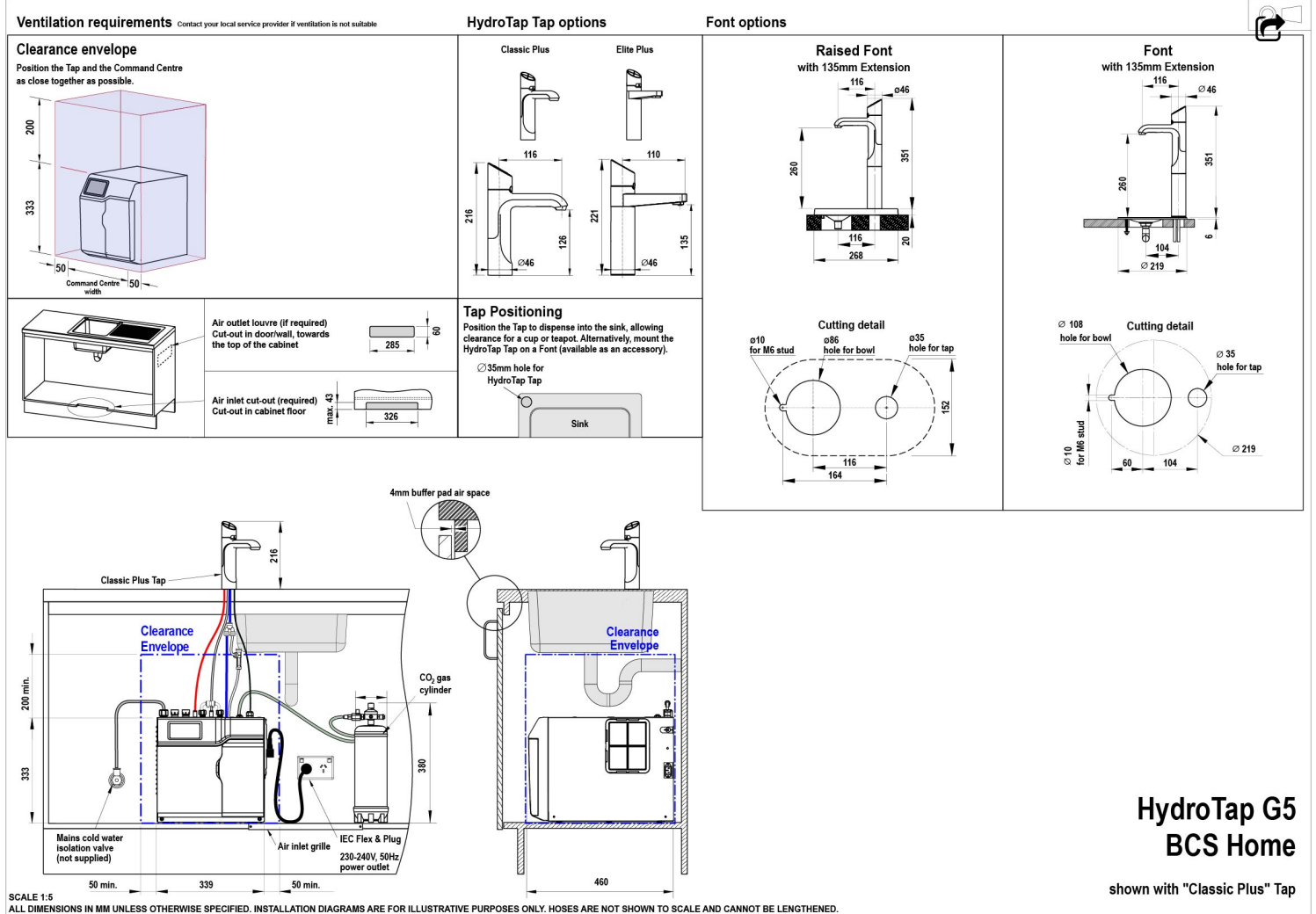
Product Approvals WaterMark, RCM, ARC

Installation Requirements

1. Installation and connection of your Zip HydroTap must be carried out by a qualified person, observing national and local regulations. 2. You will require suitable mains electrical and drinking water connections, plus waste water drainage all within 1.5 metres of the product. 3. HydroTap is air-cooled so discrete cabinetry cut-outs are required for ventilation. 4. Installation on most bench tops is straightforward however some stone bench tops may require a specialised cutting service. 5. If you live in a hard water area, we recommend installation of a Zip scale filtration kit. 6. Installation by Zip Professional Service can be arranged with a phone call or through www.zipwater.com

Installation Detail

BKL2 HydroTap G5 v1.00 02.21 BCS BCS20



**HydroTap G5
BCS Home**

shown with "Classic Plus" Tap

